



pro.equip

---



## User Guide

# COMMERCIAL MICROWAVE OVEN

ED141 / 4007087

---

Proudly Distributed By

**New Zealand**  
Southern Hospitality  
[southernhospitality.co.nz](http://southernhospitality.co.nz)  
NZBN - 9429039301956

**Australia**  
Reward Hospitality  
[rewardhospitality.com.au](http://rewardhospitality.com.au)  
ABN - 40010183669

This image shows a single sheet of white paper with horizontal ruling lines. The lines are evenly spaced and run across the width of the page. There are no margins, text, or other markings on the paper.

## TABLE OF CONTENTS

Using this Instruction Booklet.....	<b>4</b>
General Precautions.....	<b>4</b>
Features Diagram.....	<b>5</b>
Specifications.....	<b>6</b>
Operation.....	<b>7</b>
Wattage Output Chart.....	<b>7</b>
Specifications.....	<b>5</b>
Microwave Cooking Functions.....	<b>8–10</b>
Safety Precautions.....	<b>11–12</b>
Care for your Microwave.....	<b>13</b>
Electrical Diagram .....	<b>14</b>

**This unit is intended for commercial use only.  
This instruction booklet contains important advice for operation  
and maintenance. Please keep the booklet in a safe place for  
future reference.**

## USING THIS INSTRUCTION BOOKLET

You have just purchased a microwave oven. Your Owner's Instructions contain valuable information on cooking with your microwave oven:

- Safety precautions
- Suitable accessories and cookware
- Useful cooking tips

This booklet contains diagrams to help you understand the functions of the oven more easily.

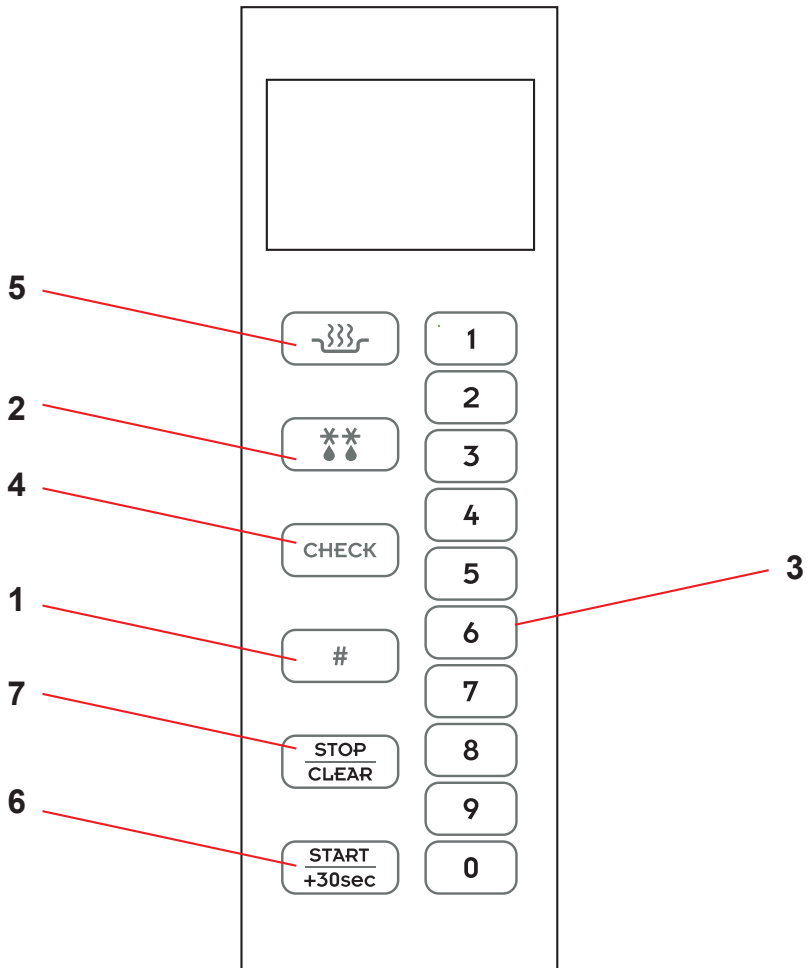
PLEASE NOTE: THIS MICROWAVE IS FOR COMMERCIAL USE ONLY

## PRECAUTIONS TO AVOID POSSIBLE EXPOSURE TO EXCESSIVE MICROWAVE ENERGY

Failure to observe the following safety precautions may result in harmful exposure to microwave energy.

- Under no circumstances should any attempt be made to operate the oven with the door open or to tamper with the safety interlocks (door latches) or to insert anything into the safety interlock holes.
- Do not place any object between the oven door and front face or allow food or cleaner residues to accumulate on sealing surfaces. Ensure that the door and door sealing surfaces are kept clean by wiping after use first with a damp cloth and then with a soft dry cloth.
- Do not operate the oven if it is damaged, until it has been repaired by a qualified microwave service technician trained by the manufacturer. It is particularly important that the oven door closes properly and that there is no damage to the:
  - Door (bent)
  - Door hinges (broken or loose)
  - Door seals and sealing surfaces
- The oven should not be adjusted or repaired by anyone other than a properly qualified microwave service technician trained by the manufacturer.

## FEATURES DIAGRAM



**1. Program:** Used to save cooking data.

**2. Defrost:** Used to defrost foods for time.

**3. Time Set Pad:** Used to set the cooking time.

**4. Check:** Used to check cooking data.

**5. Power:** Used to set power level.

**6. Start /+30 Sec:** Used to start the oven and also used to set a reheat time.

**7. Stop/Clear:** Used to stop the oven operation and to delete the cooking data.

## COMMERCIAL MICROWAVE OVEN

### FEATURES

- LED Display
- Digital Timer
- Defrost Timer
- Stainless Steel Casing
- 10 Power Levels
- 25L Capacity
- 1000 Watt Power Output
- 9 Auto Menus




### TECHNICAL DATA SPECIFICATION

<b>DIMENSIONS</b>	Width	510mm
	Depth	382mm
	Height	330mm
<b>CAPACITY</b>	25L	
<b>NET WEIGHT</b>	16.5kg	
<b>POWER</b>	1560W / 220–240V, 50Hz	
	10 Amp Plug Supplied	

## OPERATION

This section includes useful information about oven operation.

1. Plug power supply cord into a standard 3-pronged 240V / AC / 50Hz power outlet.
  2. After placing the food in a suitable container, open the oven door and put it on the plate tray.
  3. Shut the door. Make sure that it is firmly closed.
- The oven light is on when the microwave oven is operating or the door is opened.
  - The oven door can be opened at any time during operation by opening the door. The oven will automatically shut off.
  - Each time a pad is touched, a BEEP will sound to acknowledge the touch.
  - The oven automatically cooks on full power unless set to a lower power level.
  - The display will show  (STANDBY indicator) when the oven is plugged in.
  - When the STOP/CLEAR pad is touched during the oven operation, the oven stops cooking and all information retained. To erase all information, touch the STOP/CLEAR pad once more. If the oven door is opened during the oven operation, all information is retained.
  - If the START pad is touched and the oven does not operate, check the area between the door and door seal for obstructions and make sure the door is closed securely. The oven will not start cooking until the door is completely closed or the program has been reset.

### NOTE

Make sure the oven is properly installed and plugged into the electrical outlet.

## WATTAGE OUTPUT CHART



The power-level is set by touching the POWER pad. The chart shows the display, the power level and the percentage of power.

Touch POWER pad	Power Level (Display)	Approximate Percentage of Power
Once	100	100%
Twice	80	80%
3 times	60	60%
4 times	40	40%

## TIME DEFROSTING

When DEFROST is selected, the automatic cycle divides the defrosting time into periods of alternating defrost and stand times by cycling on and off.



1. Touch  pad  
The DEFROST indicator lights and  (STANDBY indicator) is displayed.
2. Touch number pads for the desired defrosting time.  
The display will show the numbers pressed in the order you touched.
3. Touch START pad.

### NOTE

Your oven can be programmed for up to 60 minutes (60:00). DEFROST Power level is 30%.


When you touch START pad, the DEFROST indicator lights to show the oven is in the DEFROST mode.

The display counts down the time to show you how much defrosting time is left in the DEFROST mode.

The oven beeps during the defrosting cycle to signal that the food needs to be turned or rearranged. When the defrosting time ends, you will hear 3 beeps.

## COOKING IN ONE STAGE



1. Touch  pad (Select desired power level.)  
The MICROWAVE and % indicators light.  
The display will show what you touched.
2. Touch number pads for the cooking time.  
This example shows power level 60.  
The display will show the numbers you pressed in the order you touched.
3. Touch START pad.

### NOTE

Your oven can be programmed at full power (100%) for up to 10 minutes (10:00).

When you touch START pad, the MICROWAVE indicator lights to show the oven is cooking. The display counts down the time to show how much cooking time is left. When the cooking time ends, you will hear 3 beeps.

### NOTE

Using lower power levels increases the cooking time which is recommended for foods such as cheese, milk and slow cooking of meats.  
The cooling fan may operate to prevent the oven being overheated.



## MEMORY FUNCTION

This microwave oven has 10 programmable pads (1~10).



1. Touch **#** pad  
The display will show "MEMORY".
2. Touch the number pads. (ex5)  
The display will show "PROG-05".
3. Touch POWER pad. (Select desired power level.)  
The MICROWAVE, % and Stage 1 indicators light.
4. Touch the NUMBER pads for cooking time.  
The display will show what you touched.
5. Touch START pad to save cooking time and power level.  
The display will show "STAGE-2" and long beep sounds.
6. Touch STOP/CLEAR pad.  
When you touch STOP/CLEAR pad, MEMORY function ends.

### NOTE

For cooking in two or three stages, repeat step 3~5 once or twice, and the display will show "STAGE-2" or "STAGE-3" and STAGE-2 and STAGE-3 indicators. Pressing START button will save cooking time and power level, "END" will be displayed.

In the event of power loss to the oven, programmed cooking times may be deleted. Please follow instructions above to reprogram memory function.

After programming is finished, just touch the NUMBER pad of the memory number you want to select.

Then 1.5 seconds, the oven automatically start cooking according to the pre-programmed cooking time and power level.

### \* Preprogrammed Cooking Times and Power Level

Pad	Cooking Time	Power Level
1	30 sec.	100%
2	45 sec.	100%
3	1 min.	100%
4	1:30 min.	100%
5	2 min.	100%
6	3 min.	100%
7	4 min.	100%
8	6 min.	100%
9	8min.	100%
10	10 min.	100%

## +30 SEC

+30 SEC allows you to reheat for 30 seconds at 100% (full power) by simply touching the +30 SEC pad.

By repeatedly touching the +30 SEC pad, you can also extend reheating time to 5 minutes by 30 second increments.

**START**  
**+30sec**

1. Touch +30 SEC pad.

When you touch +30 SEC, “:30” is displayed.

The oven will start immediately. It will add 30 seconds to the time counting down each time the pad is touched.

## CHECK FUNCTION

This feature allows you to check the programmed cooking time and power level.

**CHECK**

1. Touch CHECK pad.

The display will show “CHECK”.

2. Touch the NUMBER pads which you want confirmation.  
(ex 5)

The display will show “PROG-05”.

The display will show cooking time, power level each stage.

If you want to end, touch STOP/CLEAR pad.

## POWERSAVE FEATURE

The oven has an automatic power save function. At any time the oven is not in operation for more than 10 seconds the oven display will become blank. Opening the door or touching the keypad will re activate the display.

## TO STOP THE OVEN WHILE THE OVEN IS OPERATING

1. Press STOP/CLEAR pad.

- You can restart the oven by touching START pad.
- Touch STOP/CLEAR once more to erase all instructions.
- You must enter in new instructions.

2. Open the door.

- You can restart the oven by closing the door and touching START.

### NOTE

Oven stops operating when door is opened.

## SAFETY PRECAUTIONS

IMPORTANT SAFETY INSTRUCTIONS READ CAREFULLY AND KEEP FOR FUTURE REFERENCE.

*Before cooking food or liquids in your microwave oven, please check that the following safety precautions are taken.*

### **WARNING:**

If the door or door seals are damaged, the oven must not be operated until it has been repaired by a competent person.

### **WARNING:**

It is hazardous for anyone other than a competent person to carry out any service or repair operation that involves the removal of a cover which gives protection against exposure to microwave energy.

### **WARNING:**

Liquids and other foods must not be heated in sealed containers since they are liable to explode.

### **WARNING:**

Microwave heating of beverages can result in delayed eruptive boiling, therefore care must be taken when handling the container; To prevent this situation ALWAYS allow a standing time of at least 20 seconds after the oven has been switched off so that the temperature can equalize. Stir during heating, if necessary, and ALWAYS stir after heating. In the event of scalding, follow these FIRST AID instructions:

- Immerse the scalded area in cold water for at least 10 minutes.
- Cover with a clean, dry dressing.
- Do not apply any creams, oils or lotions.

### **WARNING:**

The contents of feeding bottles and baby food jars must be stirred or shaken and the temperature checked before consumption, in order to avoid burns.

- Only use utensils that are suitable for use in microwave ovens;  
**DO NOT** use any metallic containers, Dinnerware with gold or silver trimmings, Skewers, forks, etc.

Remove wire twist ties from paper or plastic bags.

**Reason:** Electric arcing or sparking may occur and may damage the oven.

- When heating food in plastic or paper containers, keep an eye on the oven due to the possibility of ignition.  
Do not use your microwave oven to dry papers or clothes.
- Small amounts of food require shorter cooking or heating time.  
If normal times are allowed they may overheat and burn.
- If smoke is observed, switch off or unplug the appliance and keep the door closed in order to stifle any flames.

## SAFETY PRECAUTIONS (CONTINUED)

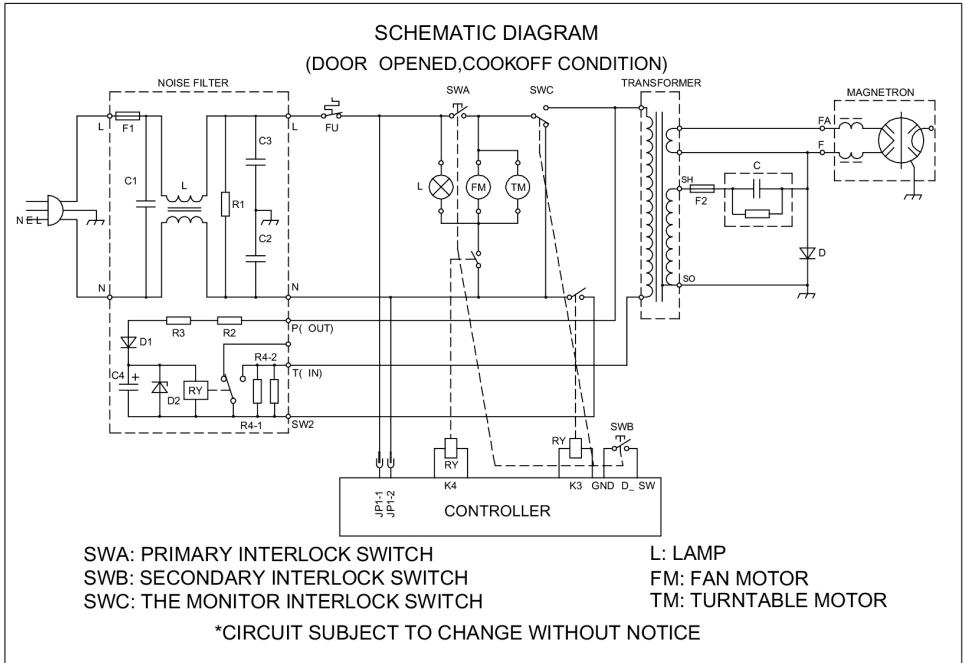
**NEVER** fill the container to the top and choose a container that is wider at the top than at the bottom to prevent the liquid from boiling over. Bottles with narrow necks may also explode if overheated.

- **NEVER** heat a baby's bottle with the teat on, as the bottle may explode if overheated.
- Eggs in their shell and whole hard-boiled eggs should not be heated in microwave ovens as they may explode, even after microwave heating has ended.  
Do not heat airtight or vacuum-sealed bottles, jars, containers, nuts in shells, tomatoes, etc.
- The oven should be cleaned regularly and any food deposits removed.
- Failure to maintain the oven in a clean condition could lead to deterioration of the surface that could adversely affect the life of the appliance and possibly result in a hazardous situation.
- The appliance should not be cleaned with a water jet.
- **DO NOT** cover the ventilation slots with cloths or paper. They may catch fire as hot air is evacuated from the oven. The oven may overheat and automatically switch itself off. It will remain inoperable until it has cooled sufficiently.
- **ALWAYS** use oven gloves when removing a dish from the oven to avoid unintentional burn.
- Do not immerse the power cable or plug in water and keep the power cable away from heated surfaces.  
Do not operate this appliance if it has a damaged power cable or plug.
- Stand at arms length from the oven when opening the door.  
**Reason:** The hot air or steam released may cause scalding.
- You may notice a Clicking sound during operation (especially when the oven is defrosting).
- The minimum height of free space necessary above the top surface of the oven is 30cm.
- When cleaning surfaces of door, door seal, cavity of the oven, use only mild, non-abrasive soaps, or detergents applied with a sponge or soft cloth.
- This appliance is allowed to be placed or installed less than 850mm above the floor.
- If the supply cord is damaged, it must be replaced by the manufacturer, its service agent or similarly qualified persons in order to avoid a hazard.
- This appliance can be used by children aged from 8 years and above and persons with reduced physical, sensory or mental capabilities or lack of experience and knowledge if they have been given supervision or instruction concerning use of the appliance in a safe way and understand the hazards involved. Children must not play with the appliance. Cleaning and user maintenance must not be made by children.
- This appliance is not intended for use by persons (including children) with reduced physical, sensory, or mental capabilities, or lack of experience and knowledge. Children should be supervised to ensure that they do not play with the appliance.
- The appliance must not be cleaned with a steam cleaner.

## CARE OF YOUR MICROWAVE OVEN

1. Turn the oven off and remove the power plug from the wall socket before cleaning.
2. Keep the inside of the oven clean. When food splatters or spilled liquids adhere to oven walls, wipe with a damp cloth. The use of harsh detergent or abrasives is not recommended.
3. The outside oven surface should be cleaned with a damp cloth. To prevent damage to the operating parts inside the oven, water should not be allowed to seep into the ventilation openings.
4. Do not allow the Control Panel to become wet. Clean with a soft, damp cloth, Do not use detergents, abrasives or spray-on cleaners on the control Panel.
5. If steam accumulates inside or around the outside of the oven door, wipe with a soft cloth. This may occur when the microwave oven is operated under high humidity conditions and in no way indicates malfunction of the unit.
6. The oven cavity floor should be cleaned regularly to avoid damage. Simply wipe the bottom surface of the oven with mild detergent, water or window cleaner and dry. Cooking vapour may collect during repeated use but in no way affects the bottom surface.
7. Remove odours from your oven by combining a cup of water with the juice and skin of one lemon in a deep microwaveable bowl. Microwave for 5 minutes, wipe thoroughly and dry with a soft cloth.
8. When it becomes necessary to replace the oven light, please consult a dealer to have it replaced.

## ELECTRICAL DIAGRAM



## NOTES

This image shows a single sheet of white paper with horizontal ruling lines. The lines are evenly spaced and run across the width of the page. There are no margins, text, or other markings on the paper.



**FOR MORE INFORMATION, OR TO RE-ORDER, PLEASE CONTACT OUR DISTRIBUTORS.**

---

**New Zealand**  
Southern Hospitality  
**[southernhospitality.co.nz](http://southernhospitality.co.nz)**  
NZBN - 9429039301956

**Australia**  
Reward Hospitality  
**[rewardhospitality.com.au](http://rewardhospitality.com.au)**  
ABN - 40010183669